



# *IMC*

EXCELLENCE IN MOTION CONTROL

**SUPPLY OF  
MOTION CONTROL PARTS**

# WELCOME TO IMC EUROPE

IMC Europe designs and manufactures industrial **brake & friction** materials, **cable control** & **hydraulics** systems for industrial machines, construction, mining equipment, commercial transport and other special purpose vehicles.

## WHY IMC?



IMC materials are specifically developed for heavy duty applications;



Your requirements are satisfied with comprehensive range of IMC products for almost any industrial vehicle;



We maintain premium quality standards to ensure excellence of product design & performance;



The quality management of IMC company is certified in accordance with DIN EN ISO 9001:2015;



The largest stockist in Europe;



Worldwide delivery;



Our know-how in vehicle application engineering enables us to develop products, technologies and services up to the highest level.



CONSTRUCTION



MINING



MILITARY  
& MARINE



RENEWABLE ENERGY  
& AGRICULTURE



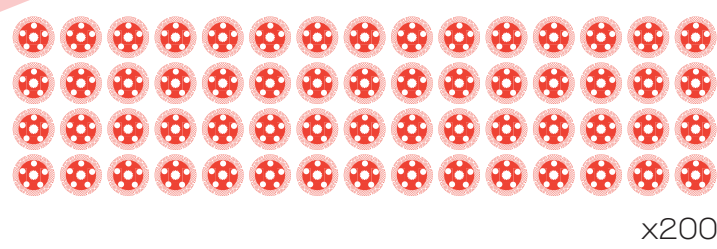
PORT HANDLING



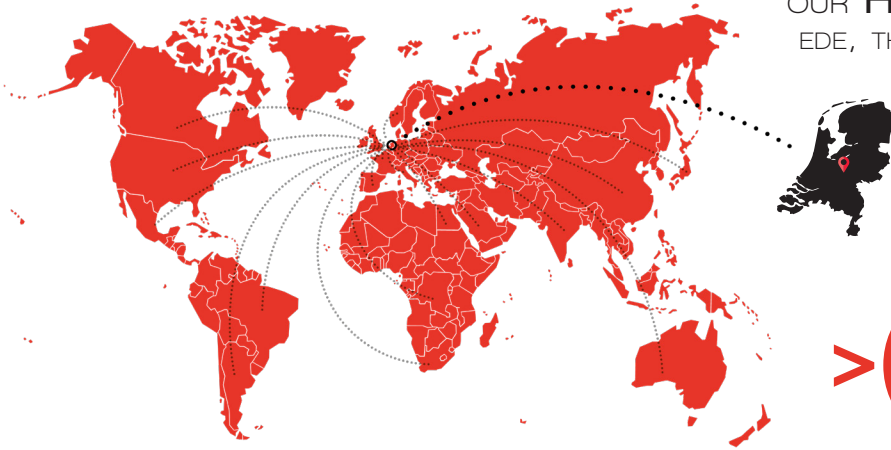
# FACTS AND FIGURES

## ABOUT US

A PORTFOLIO  
OF **12.000** ITEMS



DISTRIBUTION IN OVER **170** COUNTRIES AND  
DELIVERY ALL AROUND THE **WORLD**



OUR **HEADQUARTER**  
EDE, THE NETHERLANDS



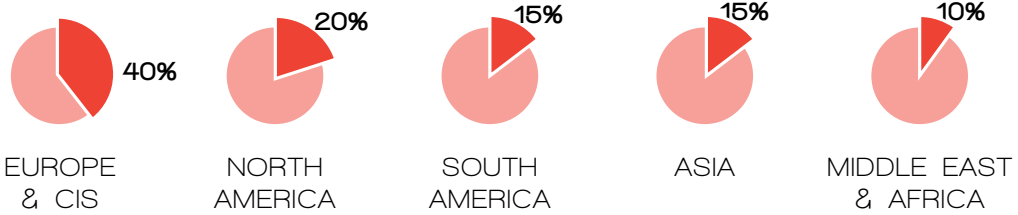
### SHIPMENTS BY



### ORDERS & DELIVERY



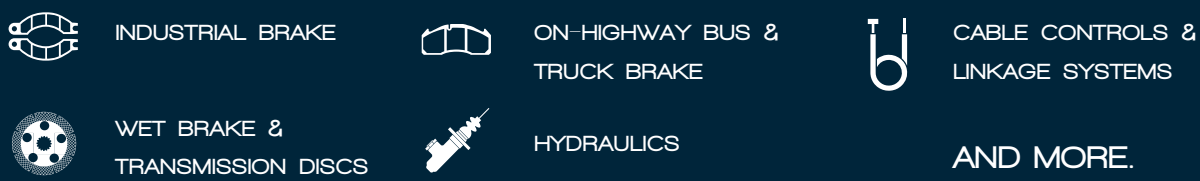
### GLOBAL PRESENCE



### OUR MARKETS

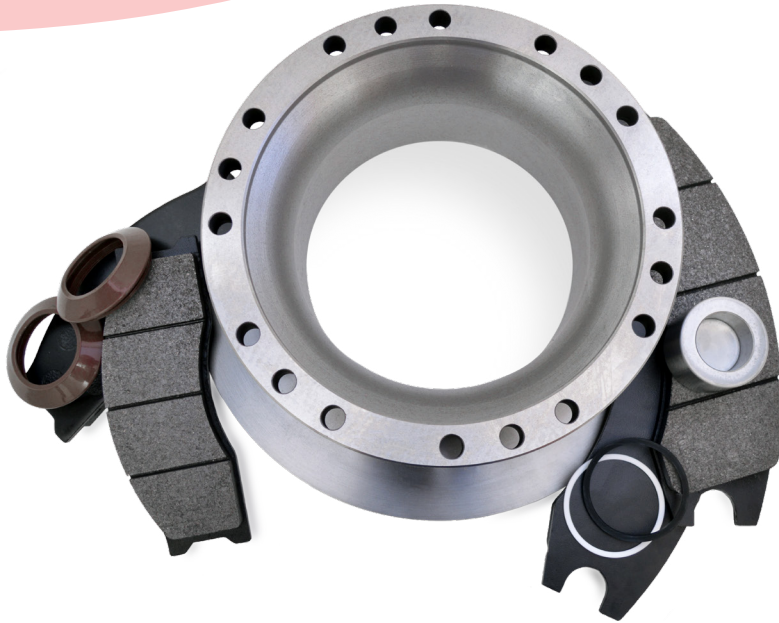


### OUR PRODUCTS





# PRODUCT RANGE

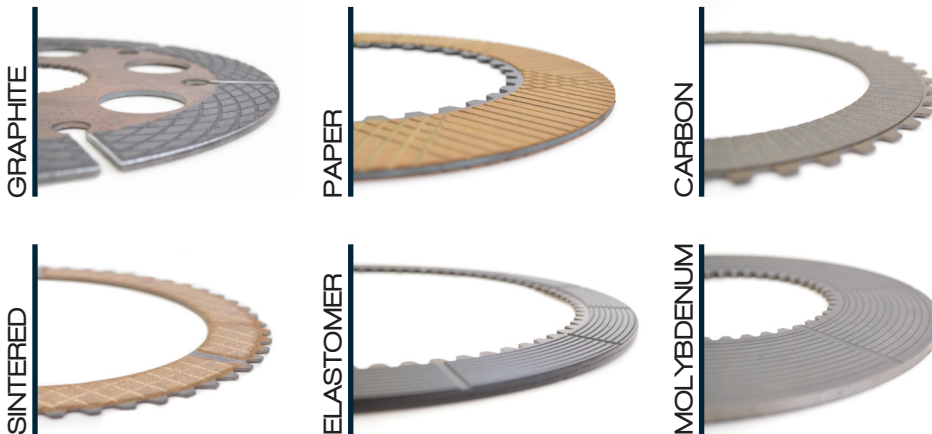


## INDUSTRIAL BRAKE

Heavy Equipment brakes are subjected to extreme conditions, particularly those used on construction and mining vehicles. IMC is a leading supplier of motion control products for off-highway vehicles. We offer a vast array of brake assemblies, brake discs, service components such as brake pads, pistons and repair kits for a variety of brake systems used in the heavy equipment industry.

## WET BRAKE & TRANSMISSION DISCS

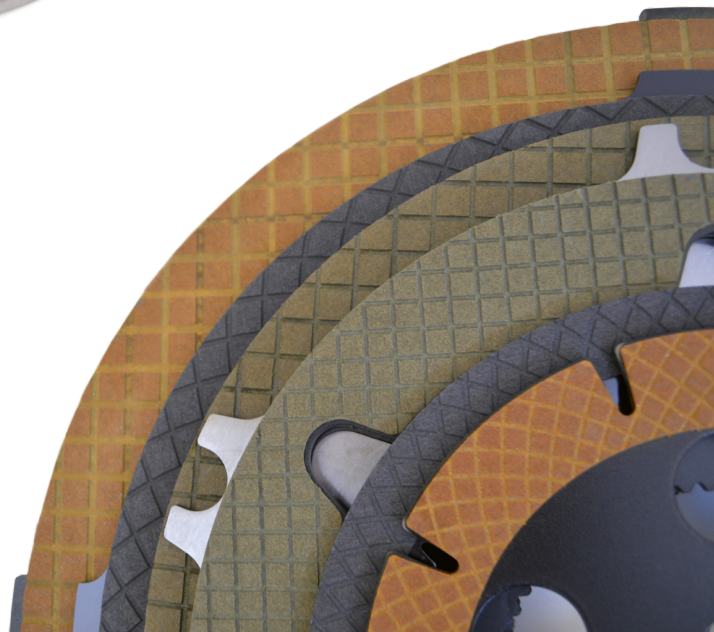
### FRICTION MATERIALS



IMC is a leading specialist in the field of industrial brake & friction products. The product portfolio covers an extensive range of OEM quality wet brake and transmission discs applied in: Construction, Mining, Agriculture, Material Handling, Military, GSE, Truck & Bus, Motorsports and more.

### APPLICATIONS

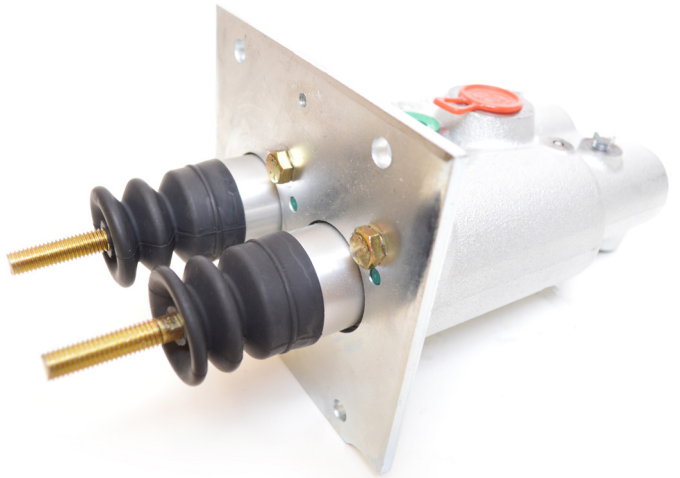
WHEEL BRAKES (OIL-IMMERSED)  
PARKING SAFETY BRAKE  
TRANSMISSION CLUTCH  
POWER TAKE-OFF CLUTCH  
STEERING CLUTCH  
DIFFERENTIAL CLUTCH  
TORQUE CONVERTER



MORE INFORMATION?  
VISIT: [IMCE.NL](http://IMCE.NL)

## HYDRAULICS

From Hydraulic Brake Valves to a complete line of highly engineered Boosted Master Cylinders, IMC offers a comprehensive line of industrial vehicle control products and customised solutions to a diverse range of vehicles.



## CABLE CONTROLS & LINKAGE SYSTEMS

IMC cable control products are designed to our customer complete satisfaction.

### MARKET APPLICATION

CONSTRUCTION

MINING

AGRICULTURE

MATERIAL HANDLING

TRUCK & BUS

MARINE



## IMC PRODUCT RANGE

We provide an extensive range of **motion control products** to our customers around the world. These products employ the quality and technological know-how developed through our **OEM business** of supplying products for a variety of leading vehicles manufactures. For each vehicle application, IMC researches the market from a global perspective, aiming to offer innovative and **high performance** materials.

## CONTACT US

[SALES@IMCE.NL](mailto:SALES@IMCE.NL)

[WWW.IMCE.NL](http://WWW.IMCE.NL)

+31(0)318 692 022



INDUSTRIAL PARK BTA12

BONNETSTRAAT 10

6718 XN EDE

THE NETHERLANDS

IMC DESIGNS, PRODUCES AND DISTRIBUTES INDUSTRIAL MOTION CONTROL PRODUCTS FOR CONSTRUCTION, MINING, COMMERCIAL AND OTHER SPECIAL PURPOSE VEHICLES. WITH A PORTFOLIO OF OVER 12.000 PRODUCTS IMC IS ONE OF THE LARGEST STOCKIST IN EUROPE, SERVING CUSTOMERS WORLDWIDE.



**EXCELLENCE IN MOTION CONTROL**

**CONTACT**

[sales@imce.nl](mailto:sales@imce.nl)

[www.imce.nl](http://www.imce.nl)

+31(0)318 692 022

LEADING SUPPLIER OF  
**PREMIUM** MOTION  
CONTROL PRODUCTS

IMC EUROPE B.V.  
Industrial Park BTA12  
Bonnetstraat 10  
6718 XN Ede  
The Netherlands